

~ Dress Yourself ~ Dress Your Home ~

Glass Boat

~ Gift Cards & Layaway Always Available ~



CLEARANCE ALERT

Don't miss out on these 5323-01SW LEE Swivel Chairs in Avalon Sky Fabric

WAS 40% off LIST at \$4870 for the PAIR
NOW \$3652.50 for the PAIR



Always at least 30% off

Custom Orders arrive in 5-7 weeks



[Explore LEE Industries](#)

MORE CLEARANCE

Don't forget to keep an eye on our [CLEARANCE](#) page





LEE Industries 2996-01SW
Swivel Chair
in Shadow Baltic Fabric

WAS \$2125
NOW ONLY \$1062.50



Paul Robert Leather/Fabric Swivel Chair

WAS \$2185

NOW ONLY \$1638-75





Mies van der Rohe Brno Chair

Designed by Mies van der Rohe in 1930 for his renowned Tugendhat House in Brno, Czech Republic, the Brno Chair reflects the groundbreaking simplicity of its original environment. The chair, an icon of 20th century design, is celebrated for its lean profile, clean lines and meticulous attention to detail.

NOW ONLY \$285



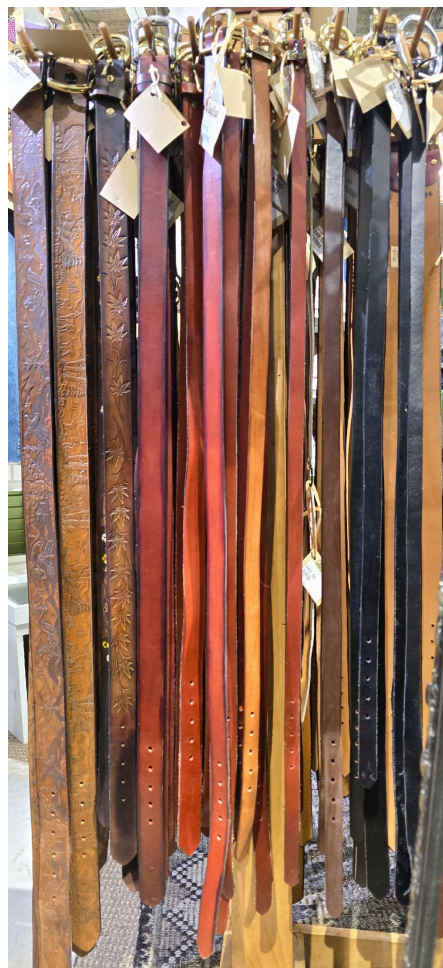
2 Weeks ONLY





Huge selection of leather belts
here!

If we don't have the perfect belt,
let us know and Ray will make it
for you!



Handmade Quality

Don't miss your chance to score a deal!



The **Beach Wide-Leg Pant** captures everything we love about relaxed dressing done right. Made from soft cotton jersey, it feels breathable, gentle on the skin and easy to wear all day long. The fluid drape creates a flattering silhouette that moves

beautifully with you, while the easy pull on waistband keeps comfort front and center without sacrificing style.

This is the pant you reach for when you want to feel comfortable but still look thoughtfully put together. It brings a nostalgic nod to laid back coastal style, updated for real life today. Wear it with a tank and sneakers for everyday errands, dress it up with a blouse and sandals for dinner out or pack it for travel when you want something that feels effortless yet polished.

It is relaxed, versatile and quietly confidence boosting, just the way great wardrobe staples should be.



Why You'll Love It

- It feels soft and breathable thanks to cotton jersey that keeps you comfortable from morning to night.
- It flatters naturally with a fluid drape and easy shape that skims the body without clinging.
- It makes getting dressed simple with a versatile style that works for casual, travel and everyday wear.

Features and Benefits

- Cotton jersey fabric that delivers breathable comfort with a soft, lived in feel.
 - Easy pull on waistband that offers flexibility and all day wearability.
- Relaxed leg silhouette that moves beautifully and flatters a variety of body types.
- Lightweight construction that feels cool, travel friendly and easy to pack.
 - Timeless design that pairs effortlessly with tanks, tees, knits and lightweight jackets.

Body: 40% Viscose, 33% Cotton, 27% Polyester

Inseam Length: 23"

Model is 5'10" wearing a 25/XS

The matching jacket arrives next week!

Cynthia Ashby

A reminder that we have an amazing group of incredibly well priced Cynthia Ashby pieces for you to choose. We know it's been hard for many of you to get out to see us. Come as soon as you safely can! Or, call 804 358 5596 and we'll help you from the comfort of your home!

Don't forget to check out all the beautiful jewelry, too!







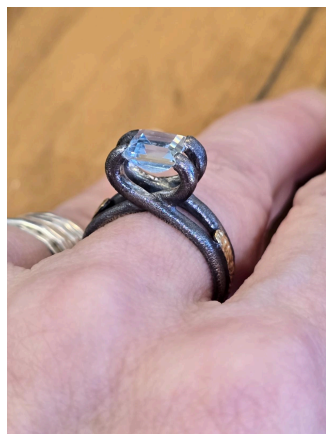






 **BORA**
HANDCRAFTED JEWELRY







Gift Cards are ALWAYS available!
Call 804 358 5596, come to see us, or click the image below



Call [804] 358-5596

X X X X X

GlassBoat ~ 3226 W. Cary Street RVA, 23221 ~ 804.358.5596



GlassBoat, Ltd. | 3226 W. Cary St. | Richmond, VA 23221 US

[Unsubscribe](#) | [Update Profile](#) | [Constant Contact Data Notice](#)



Try email marketing for free today!